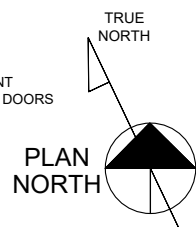


FLOOR PLAN
LBL GROUND LEVEL

SCALE: NTS
 ARCH REF: A2/A111
 QUANTITY: TYPE A - 01,
 TYPE B - 01,
 TYPE C - 01,
 TYPE D - 04,
 TYPE E - 01,
 TYPE F - 01,
 TYPE G - 02

GLASS WALL SYSTEM(S):
 KAWNEER IR 501 IMPACT RESISTANT ALUMINUM STOREFRONT
 ASSA ABLOY SL500 RESILIENCE IMPACT RESISTANT SLIDING DOORS
 ASSA ABLOY SL500 BESAM INTERIOR SLIDING DOORS

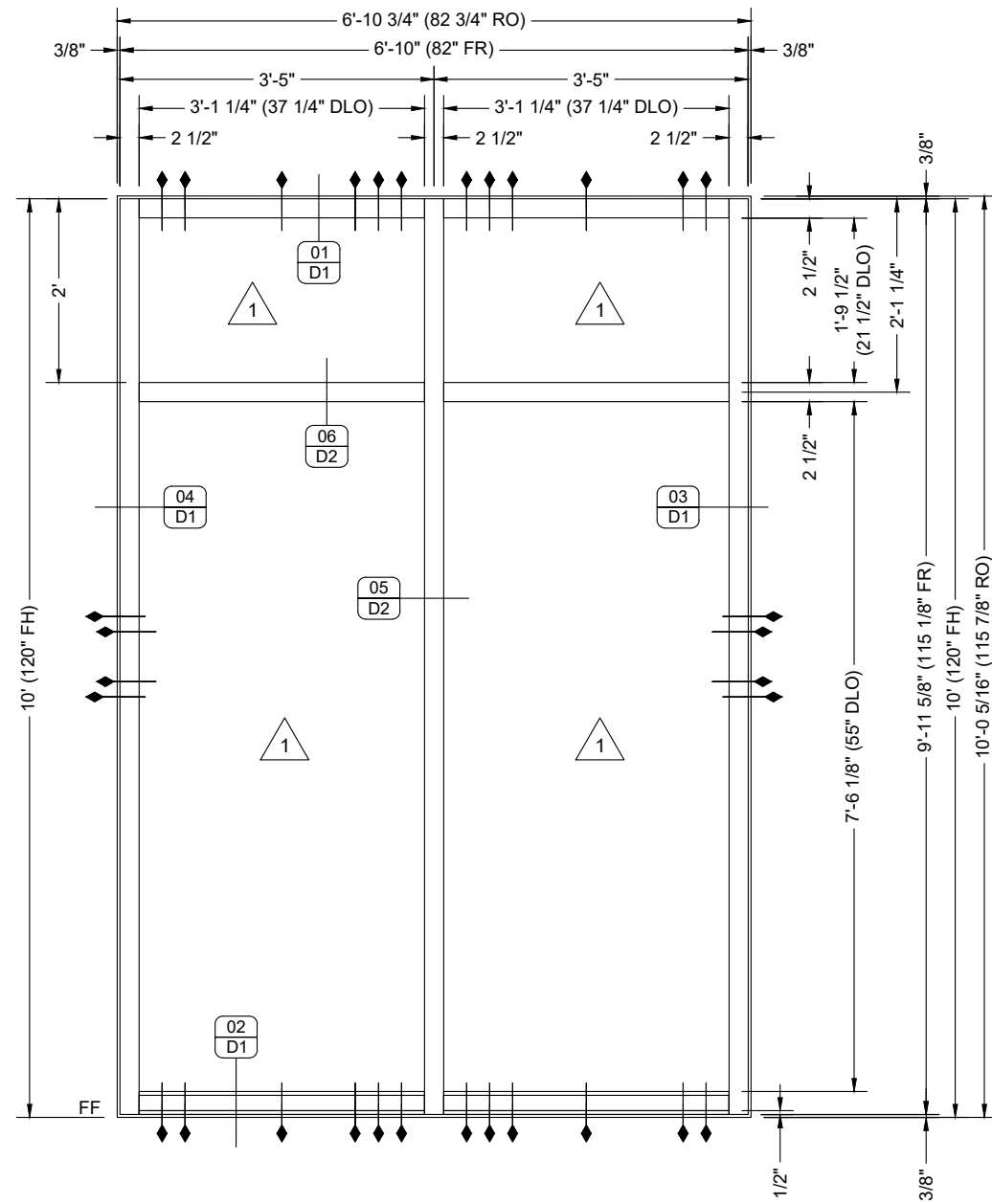


DATE	BY	DESCRIPTION
04/06/21	fp	First Submittal
	1	
	SUB	

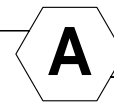
EVINS GLASS SERVICE, INC.
 101 N.P.I.D., CORPUS CHRISTI, TX 78406
 WORK (361) 884-3995 FAX (361) 884-4262

PROJECT: CoastLife Credit Union, Corpus Christi - Saratoga Branch
NEW BUILDING
 ARCHITECT: MG ARCHITECTS
 713-5824707
 GENERAL CONTRACTOR: INTEGRATED BUILDERS GROUP
 916-268-4737

PROJECT NO.	EGS-2103-03
DRAWN BY	fp
DATE	04/06/21
SCALE	NTS
DRAWING	FLOOR PLANS
SHEET	P1



ELEVATION

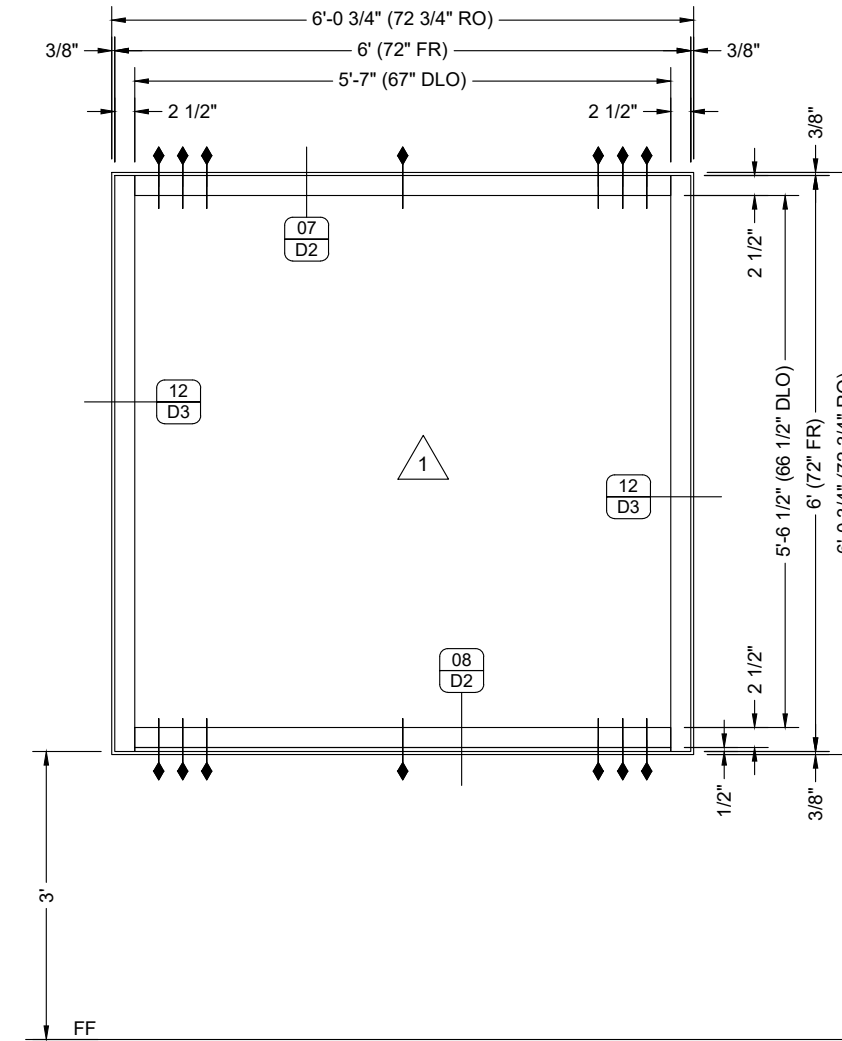


EXT STOREFRONT

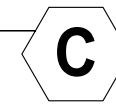
KAWNEER IR 501 IMPACT ALUMINUM STOREFRONT

QUANTITY: 01
 SCALE: 1/2" = 1'-0"
 ARCH REF: A2/A111
 B1/A201
 A5/A501
 B4/A501
 A2/A603

NOTE: SEE ANCHORING DRAWINGS FOR ANCHOR TYPES AND SPACING.



ELEVATION



EXT STOREFRONT

KAWNEER IR 501 IMPACT ALUMINUM STOREFRONT

QUANTITY: 01
 SCALE: 1/2" = 1'-0"
 ARCH REF: A2/A111
 B1/A201
 C2/A301
 A2/A311
 B1/A501
 C1/A501
 A2/A603

SUB		BY	DATE	DESCRIPTION
1	1	fp	04/06/21	First Submittal

EVINS GLASS SERVICE, INC.

101 N.P.I.D., CORPUS CHRISTI, TX 78406

WORK (361) 884-3995 FAX (361) 884-4262

PROJECT: Coastal Life Credit Union, Corpus Christi - Saratoga Branch

NEW BUILDING

ARCHITECT: MG ARCHITECTS

GENERAL CONTRACTOR: INTEGRATED BUILDERS GROUP

916-268-4737

PROJECT NO. EGS-2103-03

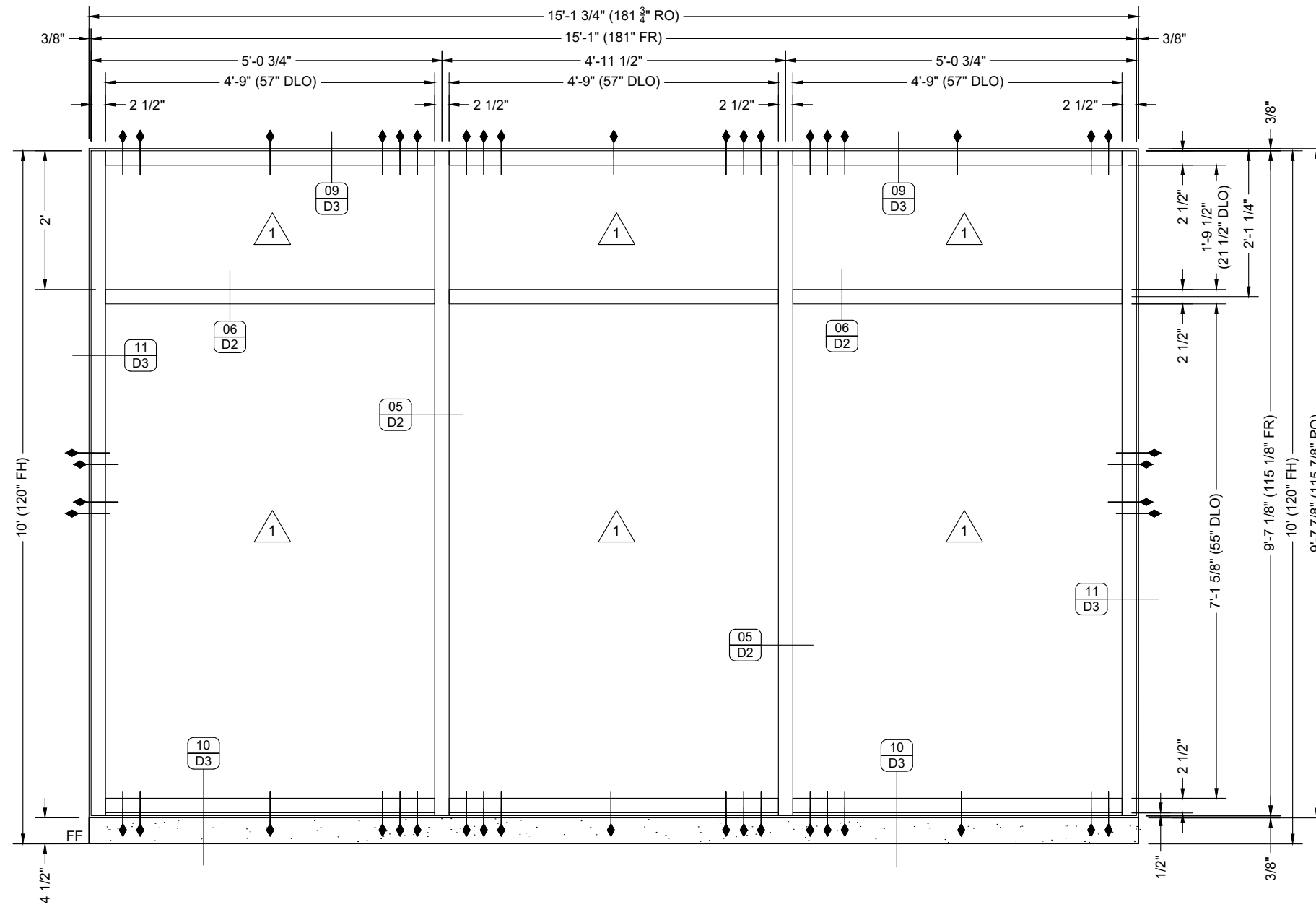
DRAWN BY: fp

DATE: 04/06/21

SCALE: 1/2" = 1'-0"

DRAWING: ELEVATIONS

SHEET: E1



ELEVATION

QUANTITY: 01
 SCALE: 1/2" = 1'-0"
 ARCH REF: A2/A111
 B1/A201
 C2/A301
 A2/A312
 A1/A502
 B1/A502
 A2/A603



EXT STOREFRONT

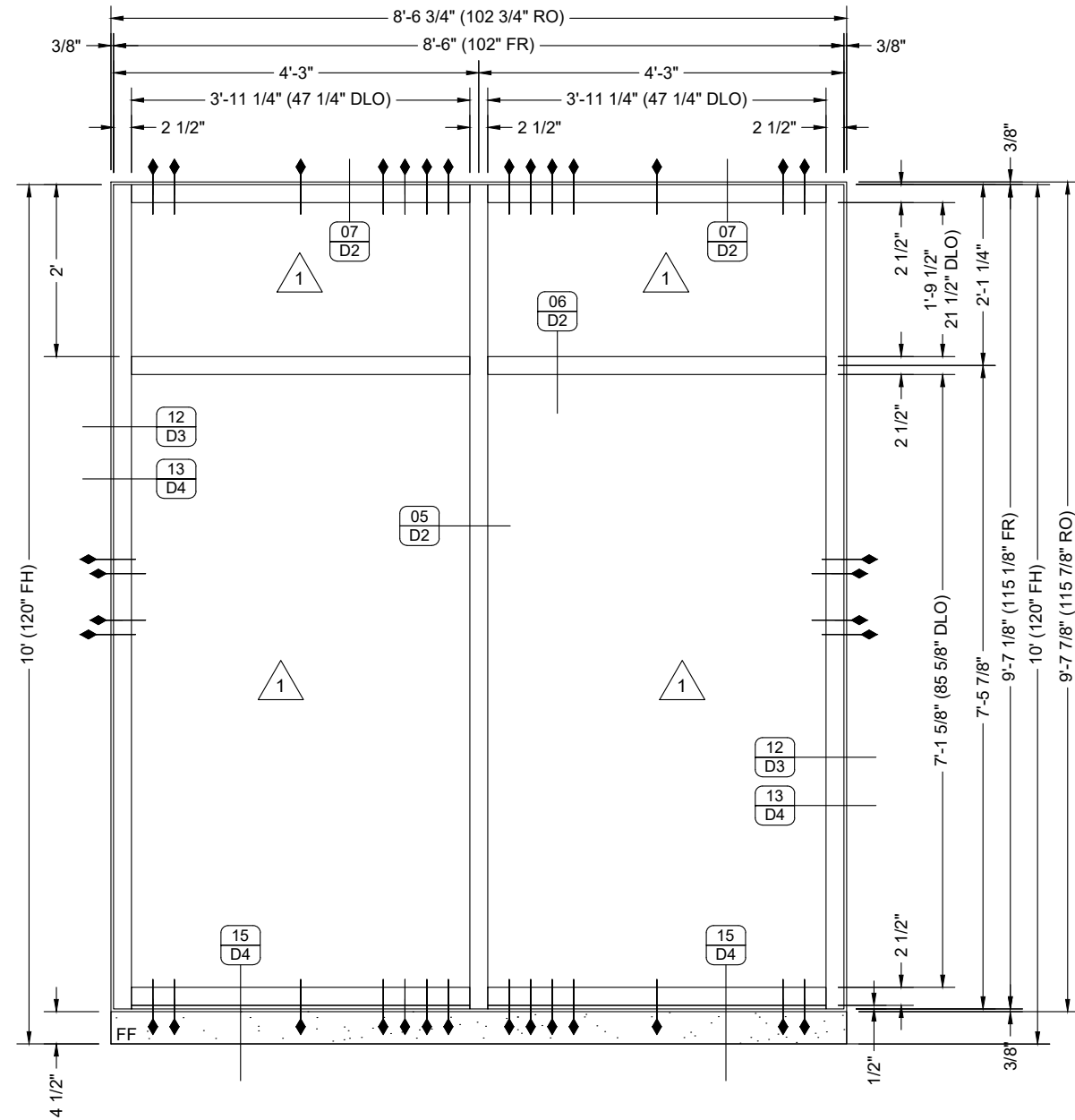
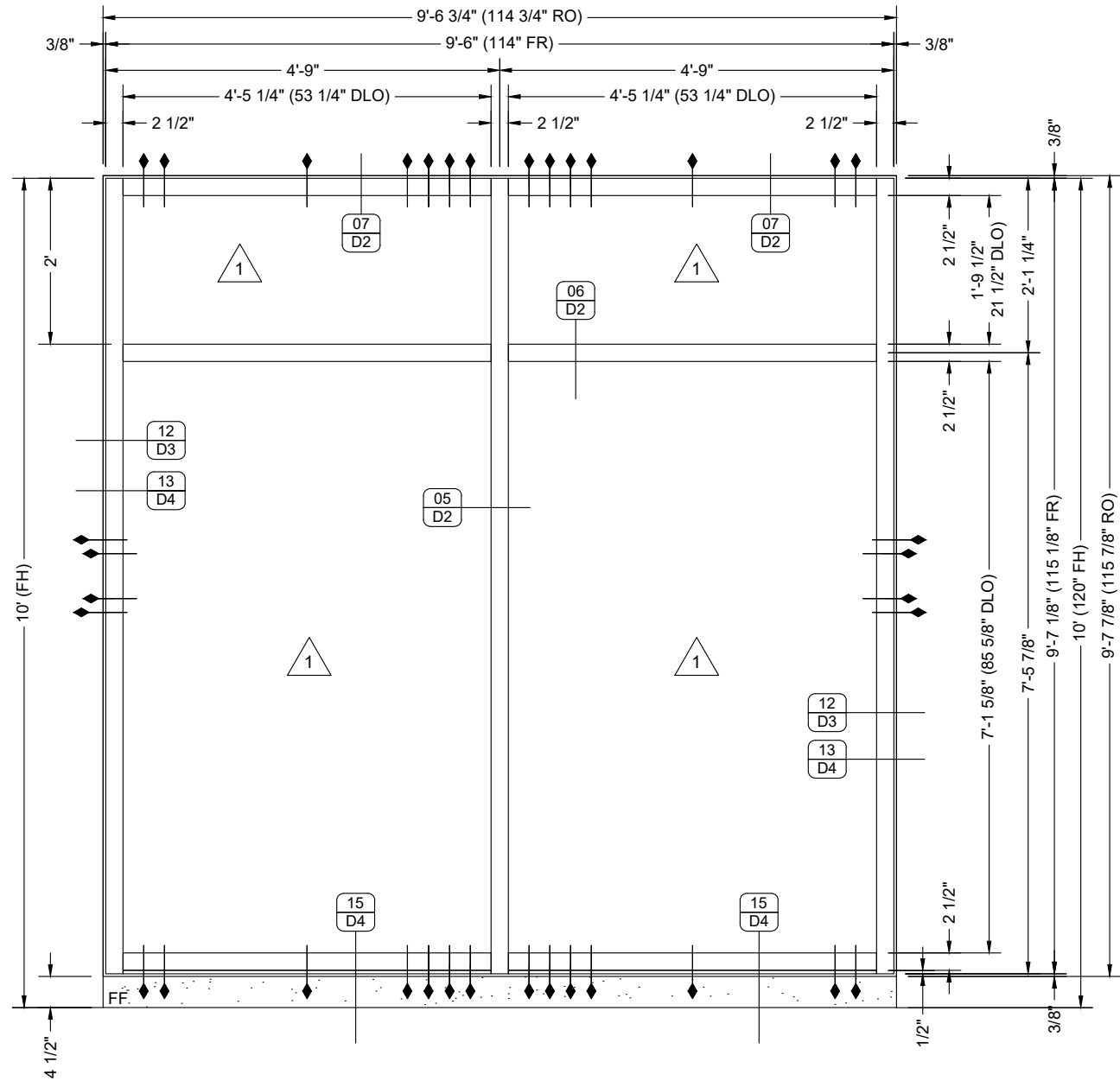
KAWNEER IR 501 IMPACT ALUMINUM STOREFRONT

DESCRIPTION	
1	First Submittal
fp	DATE
1	04/06/21
SUB	BY

EVINS GLASS SERVICE, INC.
 101 N.P.I.D., CORPUS CHRISTI, TX 78406
 WORK (361) 884-3995 FAX (361) 884-4262

PROJECT: CoastalLife Credit Union, Corpus Christi - Saratoga Branch
NEW BUILDING
 ARCHITECT: MG ARCHITECTS
 713-582-0707
 GENERAL CONTRACTOR: INTEGRATED BUILDERS GROUP
 816-268-4737

PROJECT NO.	
EGS-2103-03	
DRAWN BY	DATE
fp	04/06/21
SCALE	
1/2" = 1'-0"	
DRAWING	
ELEVATIONS	
SHEET	
E2	



NOTE: SEE ANCHORING DRAWINGS FOR ANCHOR TYPES AND SPACING.

ELEVATION

QUANTITY: 04
 SCALE: 1/2" = 1'-0"
 ARCH REF: A2/A111

D

EXT STOREFRONT

KAWNEER IR 501 IMPACT ALUMINUM STOREFRONT

A1/A201 B2/A301 C2/A301 A1/A311 A1/A312 A3/A501 C1/A501 A2/A603

ELEVATION

QUANTITY: 02
 SCALE: 1/2" = 1'-0"
 ARCH REF: A2/A111
 A2/A603

G

EXT STOREFRONT

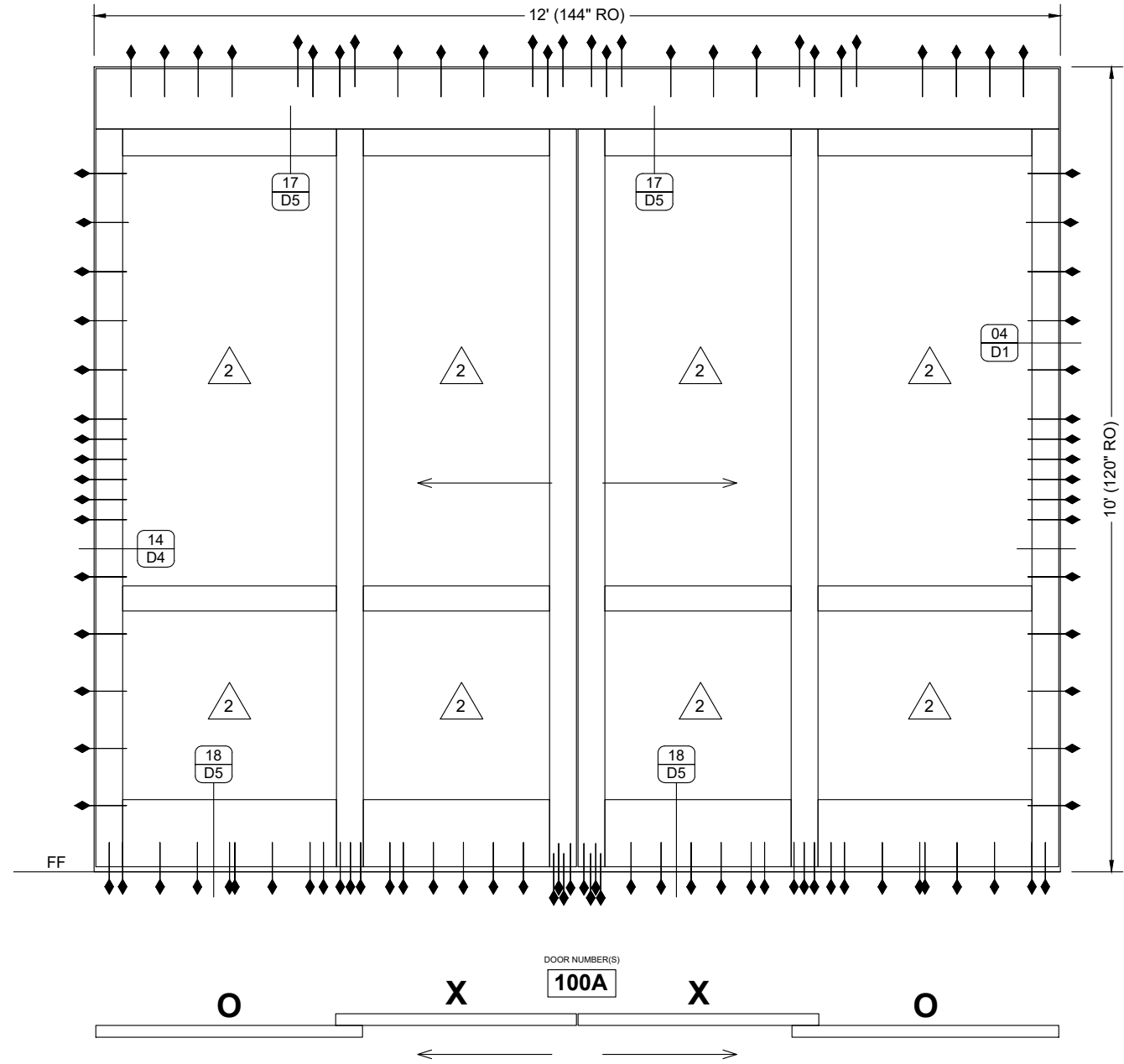
KAWNEER IR 501 IMPACT ALUMINUM STOREFRONT

DATE	DESCRIPTION
04/06/21	First Submittal
fp	BY
1	SUB

EVINS GLASS SERVICE, INC.
 101 N.P.I.D., CORPUS CHRISTI, TX 78406
 WORK (361) 884-3995 FAX (361) 884-4262

PROJECT: Coastal Life Credit Union, Corpus Christi - Saratoga Branch
NEW BUILDING
 ARCHITECT: MG ARCHITECTS
 GENERAL CONTRACTOR: INTEGRATED BUILDERS GROUP

PROJECT NO.	EGS-2103-03
DRAWN BY	fp
DATE	04/06/21
SCALE	1/2" = 1'-0"
DRAWING	ELEVATIONS
SHEET	E3



ELEVATION

QUANTITY: 01
 SCALE: 1/2" = 1'-0"
 ARCH REF: A2/A111
 A1/A201
 A2/A301
 A3/A312
 A2/A501
 B2/A501
 A4/A501
 A2/A603



EXT SLIDING DOOR

ASSA ABLOY SL500 RESILIENCE IMPACT SLIDING DOOR SYSTEM

NOTE: SEE ANCHORING DRAWINGS FOR ANCHOR TYPES AND SPACING.

HARDWARE

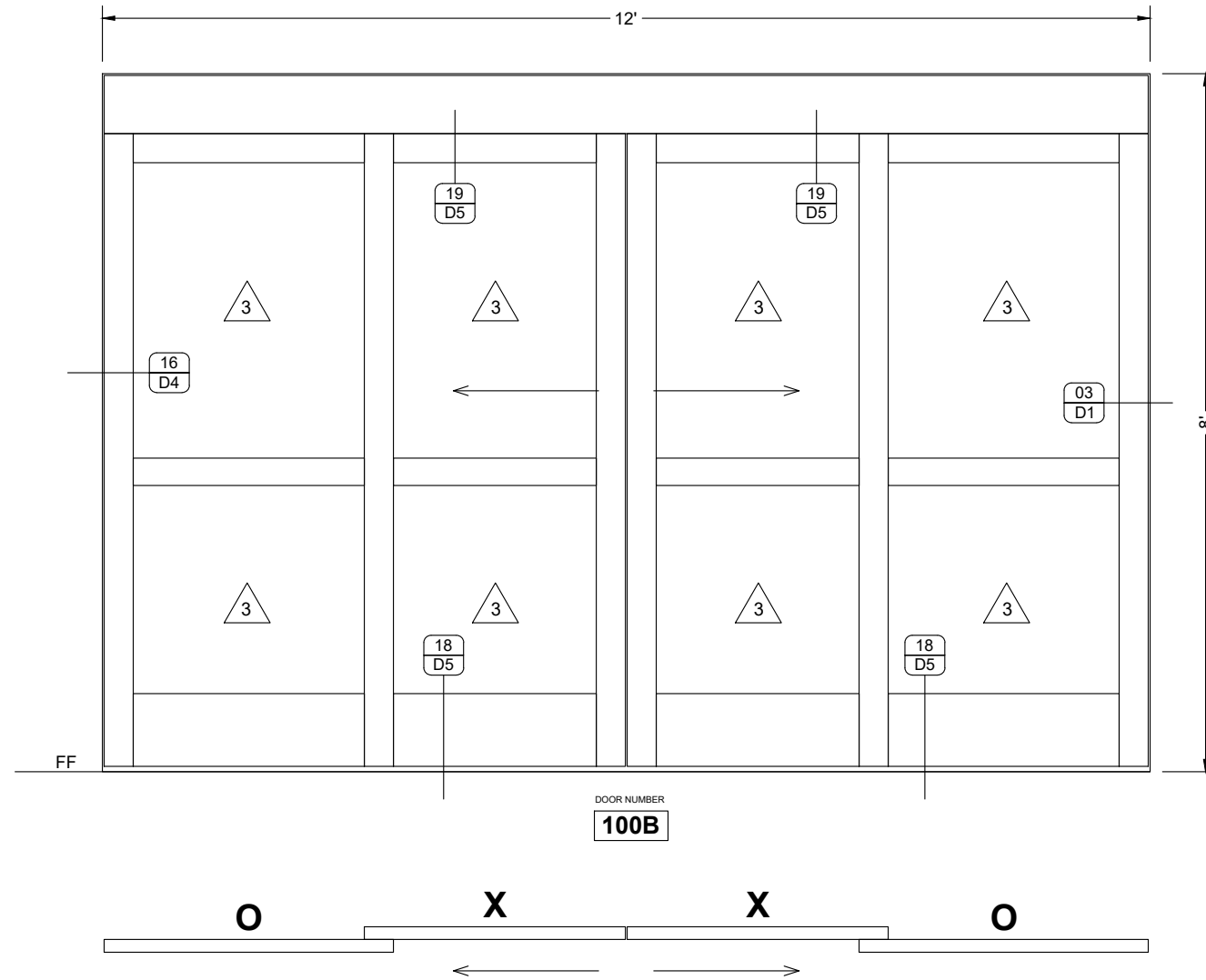
DOOR(S): 100A (SLIDER)
 GROUP: SPECIFIC TO DOOR
 NOTE: REFER TO DOOR MANUFACTURER SUBMITTALS IN THE REFERENCE SHEETS FOR THE DIMENSIONS, INSTALLATION INSTRUCTIONS AND ANY HARDWARE ASSOCIATED WITH THE DOOR.
 NOTE: VERIFY WINDSTORM CERTIFICATION OF SPECIFIED HARDWARE BUILT AS BASIS-OF-DESIGN ACCORDING TO THE APPROVED PRODUCT EVALUATION DOCUMENTS FOR DOOR MANUFACTURER.

NO.	DATE	BY	DESCRIPTION
1	04/06/21	fp	First Submittal

EVINS GLASS SERVICE, INC.
 101 N.P.I.D., CORPUS CHRISTI, TX 78406
 WORK (361) 884-3995 FAX (361) 884-4262

PROJECT: CoastLife Credit Union, Corpus Christi - Saratoga Branch
NEW BUILDING
 ARCHITECT: MG ARCHITECTS
 713-582-0707
 GENERAL CONTRACTOR: INTEGRATED BUILDERS GROUP
 916-268-4737

PROJECT NO. EGS-2103-03	
DRAWN BY fp	DATE 04/06/21
SCALE 1/2" = 1'-0"	
DRAWING ELEVATIONS	
SHEET E4	



ELEVATION

QUANTITY: 01
 SCALE: 1/2" = 1'-0"
 ARCH REF: A2/A111
 A2/A301
 A2/A501
 B4/A501
 B5/A501
 A2/A603



INT SLIDING DOOR

ASSA ABLOY BESAM SL500 ALUMINUM SLIDING DOOR SYSTEM

HARDWARE

DOOR(S): 100B (SLIDER)
 GROUP: SPECIFIC TO DOOR

NOTE: REFER TO DOOR MANUFACTURER SUBMITTALS IN THE REFERENCE SHEETS FOR THE DIMENSIONS, INSTALLATION INSTRUCTIONS AND ANY HARDWARE ASSOCIATED WITH THE DOOR.

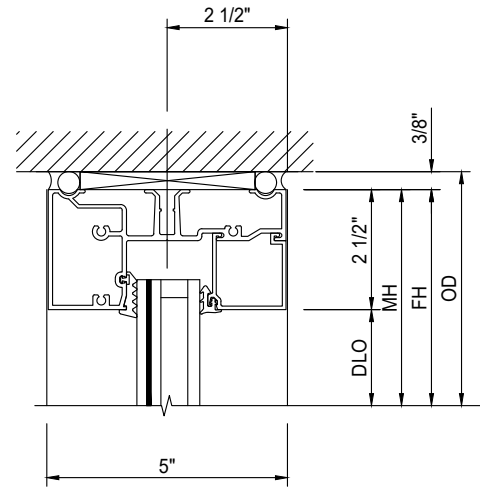
NO.	DATE	BY	DESCRIPTION
1	04/06/21	fp	First Submittal

EVINS GLASS SERVICE, INC.
 101 N.P.I.D., CORPUS CHRISTI, TX 78406
 WORK (361) 884-3995 FAX (361) 884-4262

PROJECT: CoastLife Credit Union, Corpus Christi - Saratoga Branch
NEW BUILDING
 ARCHITECT: MG ARCHITECTS
 713-582-0707
 GENERAL CONTRACTOR: INTEGRATED BUILDERS GROUP
 816-268-4737

PROJECT NO.	EGS-2103-03
DRAWN BY	fp
DATE	04/06/21
SCALE	1/2" = 1'-0"
DRAWING	ELEVATIONS
SHEET	E5

575103 IR 501 STANDARD SILL/HEAD
 575104 IR 501 GLASS STOP

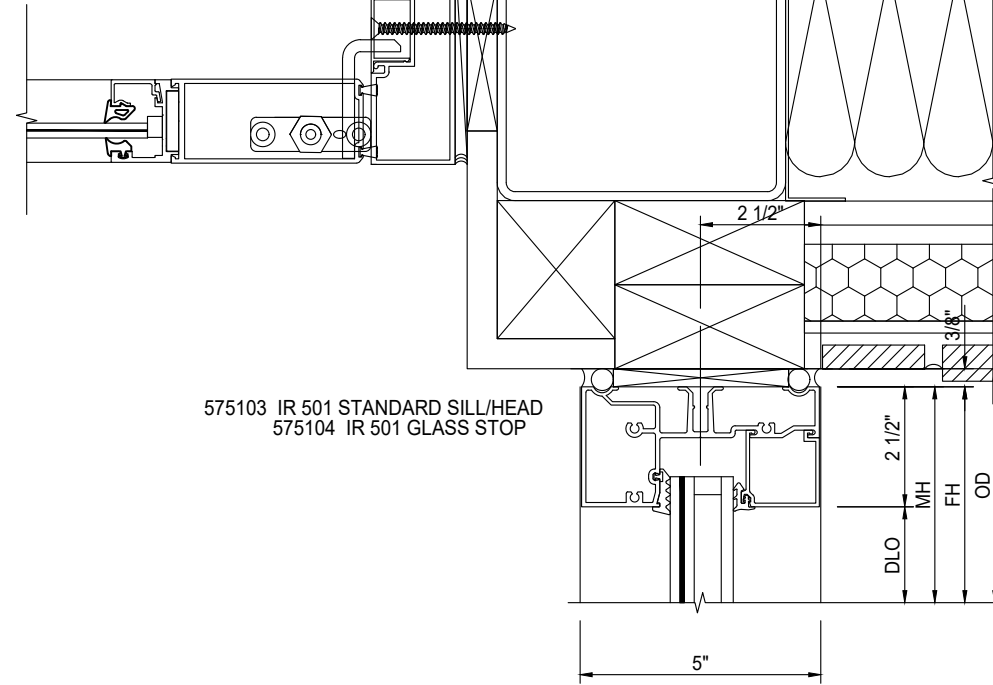


DETAIL

SCALE: 3" = 1'-0"
 ARCH REF: N/A

01 HEAD

GLASS WALL SYSTEM TYPE:
 KAWNEER IR 501 IMPACT RESISTANT ALUMINUM STOREFRONT



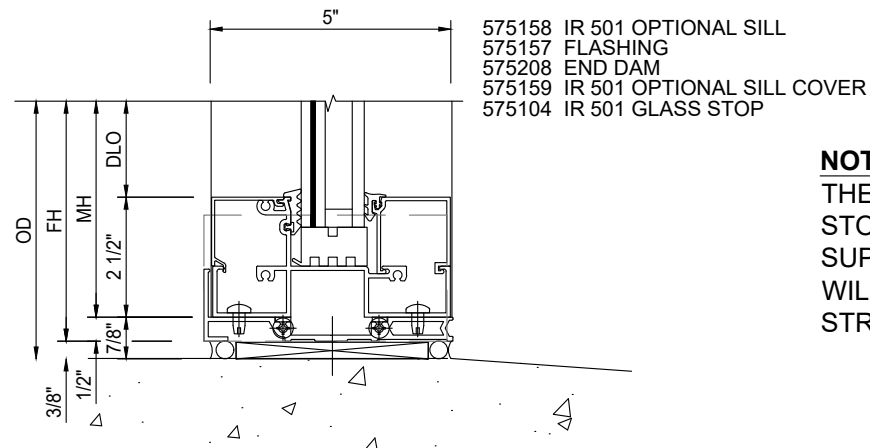
575103 IR 501 STANDARD SILL/HEAD
 575104 IR 501 GLASS STOP

DETAIL

SCALE: 3" = 1'-0"
 ARCH REF: B5/A501

03 MIXED WALL JUNCTION

GLASS WALL SYSTEM TYPE:
 KAWNEER IR 501 IMPACT RESISTANT ALUMINUM STOREFRONT
 ASSA ABLOY SL500 BESAM INTERIOR SLIDING DOOR



575158 IR 501 OPTIONAL SILL
 575157 FLASHING
 575208 END DAM
 575159 IR 501 OPTIONAL SILL COVER
 575104 IR 501 GLASS STOP

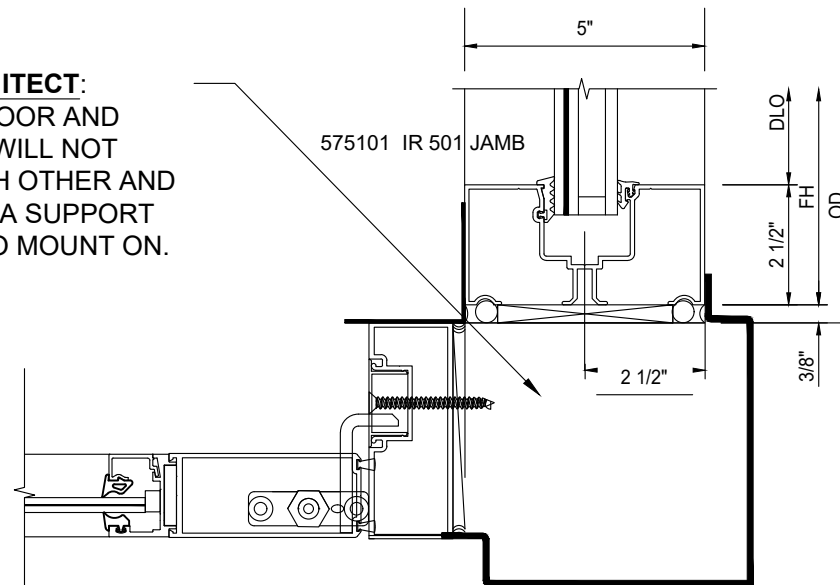
DETAIL

SCALE: 3" = 1'-0"
 ARCH REF: N/A

02 SILL

GLASS WALL SYSTEM TYPE:
 KAWNEER IR 501 IMPACT RESISTANT ALUMINUM STOREFRONT

NOTE TO ARCHITECT:
 THE SLIDING DOOR AND STOREFRONT WILL NOT SUPPORT EACH OTHER AND WILL REQUIRE A SUPPORT STRUCTURE TO MOUNT ON.



575101 IR 501 JAMB

DETAIL

SCALE: 3" = 1'-0"
 ARCH REF: A5/A501

04 MIXED OUTSIDE CORNER

GLASS WALL SYSTEM TYPE:
 KAWNEER IR 501 IMPACT RESISTANT ALUMINUM STOREFRONT
 ASSA ABLOY SL500 RESILIENCE IMPACT RESISTANT SLIDING DOOR

EVINS GLASS SERVICE, INC.
 101 N.P.I.D., CORPUS CHRISTI, TX 78406
 WORK (361) 884-3995 FAX (361) 884-4262

PROJECT
 CoastLife Credit Union, Corpus Christi - Saratoga Branch
NEW BUILDING
 ARCHITECT
 MG ARCHITECTS
 713-582-0707
 GENERAL CONTRACTOR
 INTEGRATED BUILDERS GROUP
 816-268-4737

PROJECT NO.	
EGS-2103-03	
DRAWN BY	DATE
fp	04/06/21
SCALE	
3" = 1'-0"	
DRAWING	
DETAILS	
SHEET	
D1	

NO.	DATE	DESCRIPTION
1	04/06/21	First Submittal